

LINDEN, NEW JERSEY

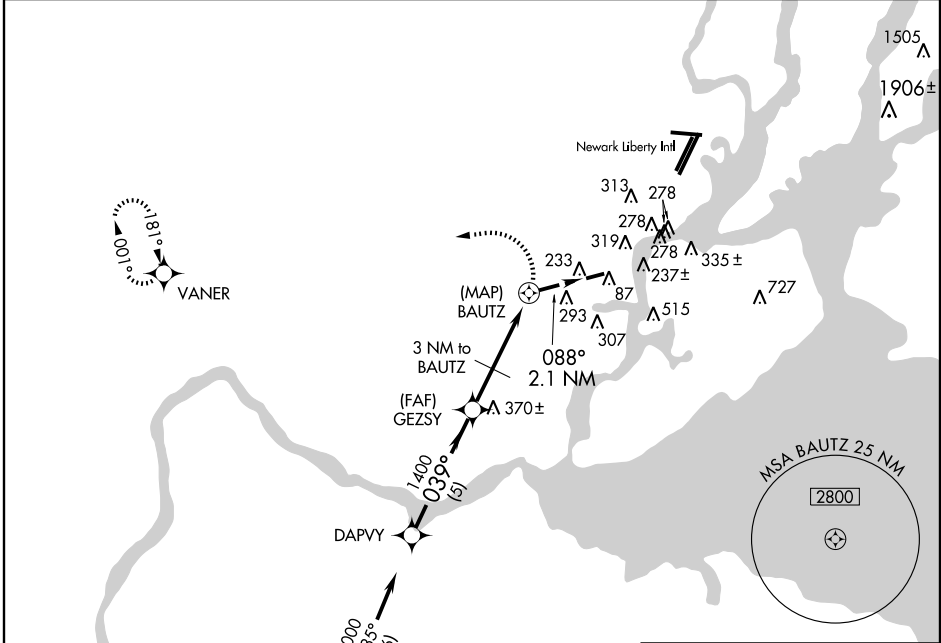
AL-6291 (FAA)

GPS-A  
LINDEN (LDJ)

APP CRS <b>039°</b>	Rwy Idg TDZE Apt Elev	<b>N/A</b> <b>N/A</b> <b>23</b>
------------------------	-----------------------------	---------------------------------------

<p><b>▽</b> Obtain local altimeter setting on CTAF, when not received, use Newark Liberty Intl altimeter setting.</p> <p><b>▲</b> NA</p>	<p>MISSED APPROACH: Climbing left turn to 2000 direct VANER WP and hold.</p>
--	--

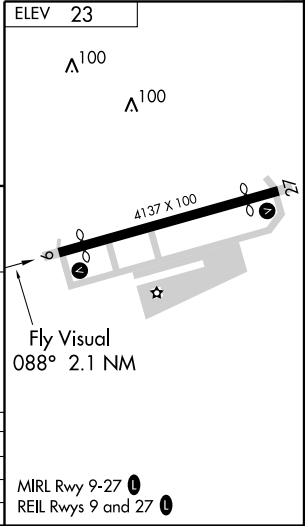
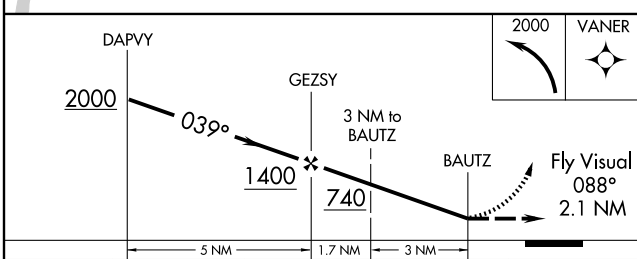
AWOS-3 <b>124.025</b>	NEW YORK APP CON <b>135.35 379.9</b>	CLNC DEL <b>128.35</b>	UNICOM <b>123.0 (CTAF)</b>
--------------------------	---	---------------------------	-------------------------------



NE-2, 31 MAY 2012 to 28 JUN 2012

NE-2, 31 MAY 2012 to 28 JUN 2012

**RADAR REQUIRED**



CATEGORY	A	B	C	D
CIRCLING	620-2½ 597 (600-2½)			NA
NEWARK ALTIMETER SETTING MINIMUMS				
CIRCLING	640-2½ 617 (700-2½)			NA

MIRL Rwy 9-27 **0**  
REIL Rwy 9 and 27 **0**

LINDEN, NEW JERSEY  
Orig-A 11125

40°37'N - 74°15'W

LINDEN (LDJ)  
GPS-A